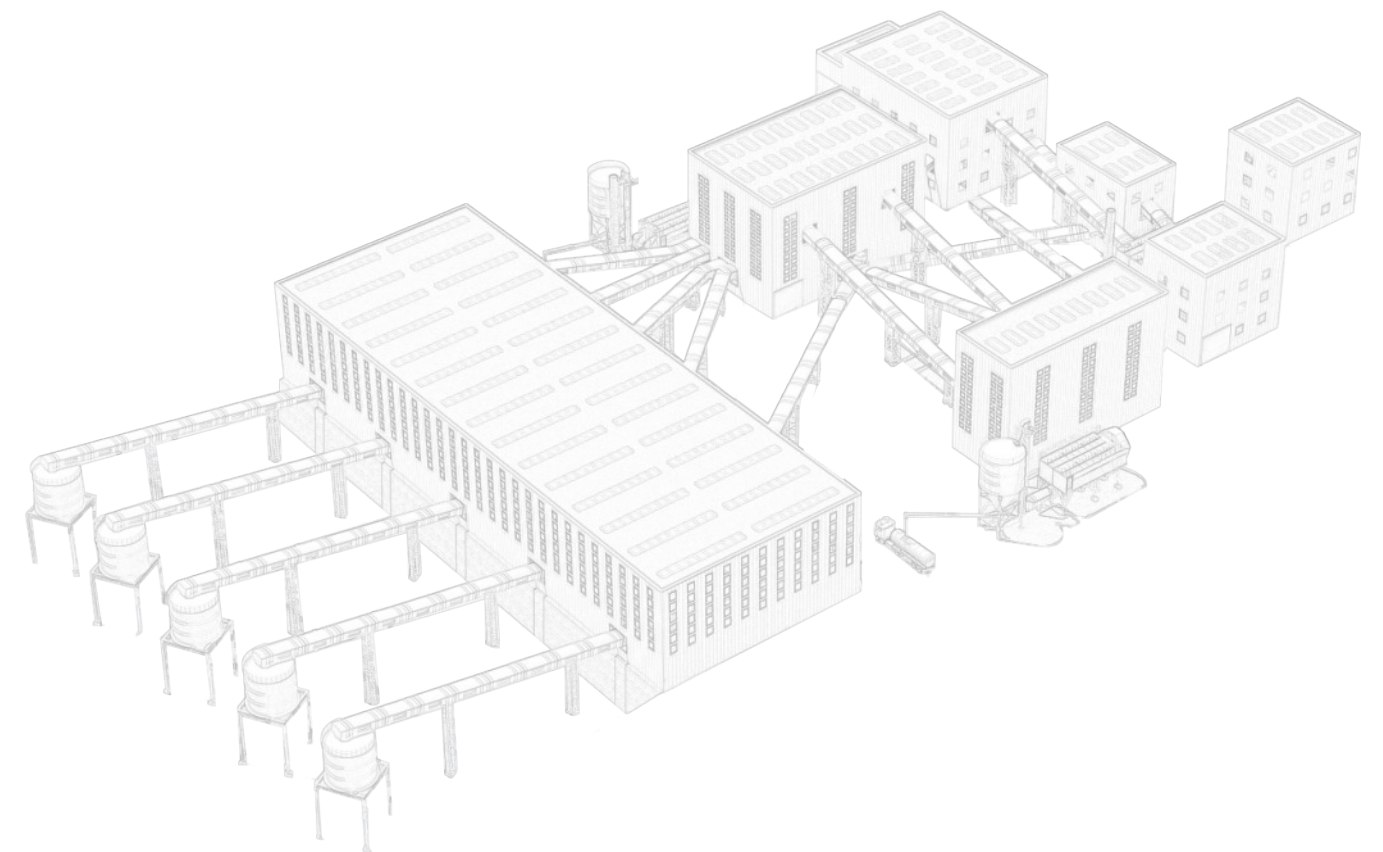




QUALITY CHANGES THE WORLD



SANY Construction Technology Co., Ltd.

SANY Industrial Park, Changsha Economic Development Zone, Hunan, China

As our technologies are continuously updated, technical specifications and configurations are subject to change without prior notice. Machines shown in the images may include optional equipment. This brochure is for reference only, with the actual product serving as the final standard.

All rights reserved by SANY Construction Technology Co., Ltd. No part of this catalog may be reproduced, copied, or transmitted for any purpose without the prior written permission of SANY Construction Technology Co., Ltd.

Tel: 400 010 3311



COMPLETE STATIONARY CRUSHING SOLUTIONS

SANY Construction Technology Co., Ltd.

CONTENS

01 ABOUT US

Company Profile	05
Core Competencies	07

02 Integrated Solutions & Application Scenarios

Application Scenarios	11
Solutions	14

03 Product Portfolio

Main Equipment of the Production Line	18
Core Products Introduction	19
Operation & Maintenance	25

04 After-Sales Support

Service Network	29
Spare Parts Supply	31

05 Project References

Production Line Applications	35
------------------------------------	----

PART 01

ABOUT US

QUALITY CHANGES THE WORLD

About SANY Group

SANY Group Co., Ltd. was founded in 1989. Since its establishment, the company has adhered to the vision of “Building a First-Class Enterprise, Fostering First-Class Talent, and Making First-Class Contributions,” and has created the well-known “SANY” brand in the industry.

SANY Group’s core business lies in equipment manufacturing, with leading products including construction machinery, mining machinery, energy equipment, industrialized construction technologies and equipment, and crushing equipment. Today, SANY concrete machinery remains the No.1 brand worldwide. Since 2020, SANY excavators have ranked No.1 in global sales for three consecutive years and have held the No.1 position in the Chinese market for twelve consecutive years. Large-tonnage cranes, crawler cranes, piling machinery, coal mining machinery, and port machinery also rank No.1 in China.

SANY Group currently owns three listed companies: SANY Heavy Industry (600031.SH), SANY Renewable Energy (688349.SH), and SANY International (00631.HK). It has established industrial parks in Changsha, Beijing, Shanghai, Shenyang, Kunshan, and Zhuhai. Notably, its Beijing piling machinery factory and Changsha No.18 Factory have been selected by the World Economic Forum as part of the Global Lighthouse Factory Network, representing the only two lighthouse factories in the global heavy equipment industry. With R&D and manufacturing centers in the United States, Germany, and India, SANY’s business spans the globe, and its products are exported to more than 150 countries and regions.

About SANY Construction

SANY Construction Technology Co., Ltd. was established in 2016 as a subsidiary of SANY Group. Its mission is “Industrializing Construction,” with a vision to provide “Technology · Equipment · Cloud Platforms” for smart construction and to make building easier worldwide. Leveraging SANY’s position among the global top three construction machinery manufacturers and its Industrial IoT strengths, SANY Construction Technology combines top-tier R&D, lean manufacturing with a stringent 0.01% tolerance elimination standard, and a worldwide marketing and service network.

Focusing on green utilization and recycling, the company develops and promotes a full range of crushing and recycling equipment and solutions—including turnkey stationary crushing plants and complete mobile crushing & recycling systems—and adheres to the philosophy of “high efficiency and energy saving, making crushing & recycling more economical.” This enables the resource reutilization of aggregates, metallic ores, construction waste, and infrastructure solid waste.

As a National High-Tech Enterprise, a National Intellectual Property Demonstration Enterprise, and a co-drafter of the national standard for construction waste recycled aggregate equipment technology, SANY’s crushing and recycling business now covers five continents. Guided by the philosophy of “All for Customers, All from Innovation,” SANY Construction Technology is committed to advancing green, low-carbon development and continuously creating value for customers worldwide.





Core Competencies

CHOOSE SANY, WORRY-FREE ETERNALLY



SANY Group – Brand Assurance

SANY Group is a global leader in equipment manufacturing, ranking as the largest construction machinery manufacturer in China and the third largest worldwide. It is also the world's No.1 concrete machinery manufacturer. In 2015, SANY was recognized by the Ministry of Industry and Information Technology of China as one of the first pilot demonstration enterprises for "Intelligent Manufacturing."



Intelligent Manufacturing · Lean Production

The essence of SANY equipment lies in its superior reliability. By introducing world-class lean manufacturing, SANY enforces a stringent 0.01% tolerance elimination standard, ensuring that every process is executed with utmost precision and every product is crafted to perfection.



Customer First · Perfect Service

To enhance the quality of product installation and delivery while improving customer satisfaction, SANY has developed a dedicated "Perfect Delivery" program tailored for its clients. Delivering excellence, every step of the way.



Cutting-Edge R&D Capability

SANY invests approximately 7% of its annual sales revenue in research and development. The company operates a national-level technology development center and a postdoctoral research workstation, ranking No.1 in the industry for patent applications. SANY has also been honored with five national science and technology awards.



Global Marketing & Service Network

SANY's business spans more than 180 countries and regions worldwide, supported by over 1,700 marketing and service outlets and 900 spare parts warehouses.



End-to-End Financial Services

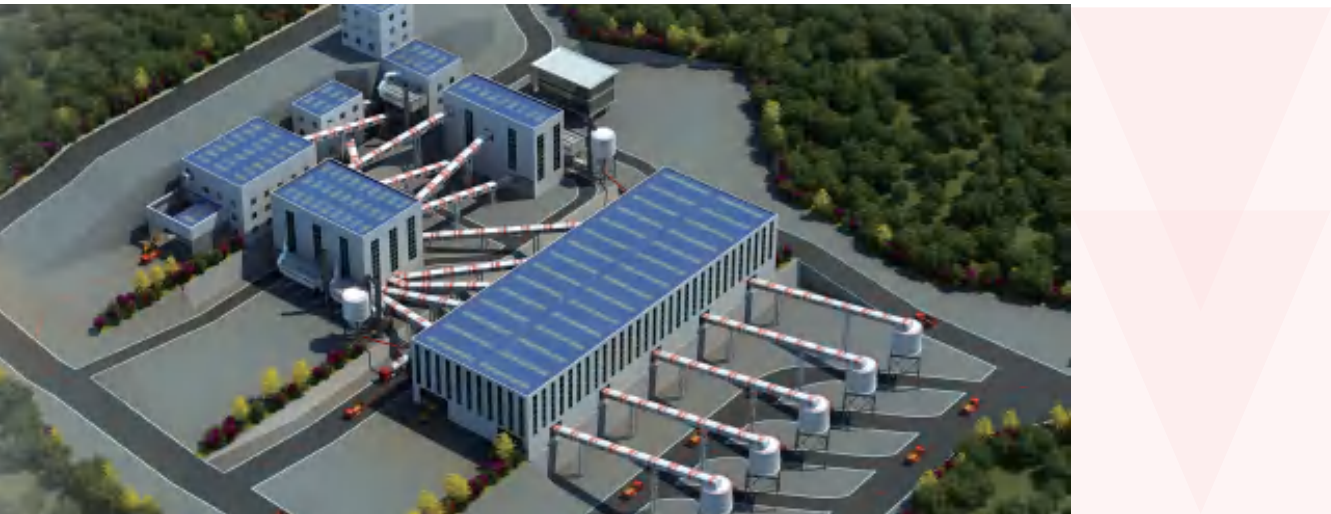
SANY Capital offers mortgage loan services for customers purchasing new SANY equipment. With a one-stop, end-to-end financial service system, SANY Capital ensures a seamless experience and provides peace of mind throughout the entire process.

PART 02

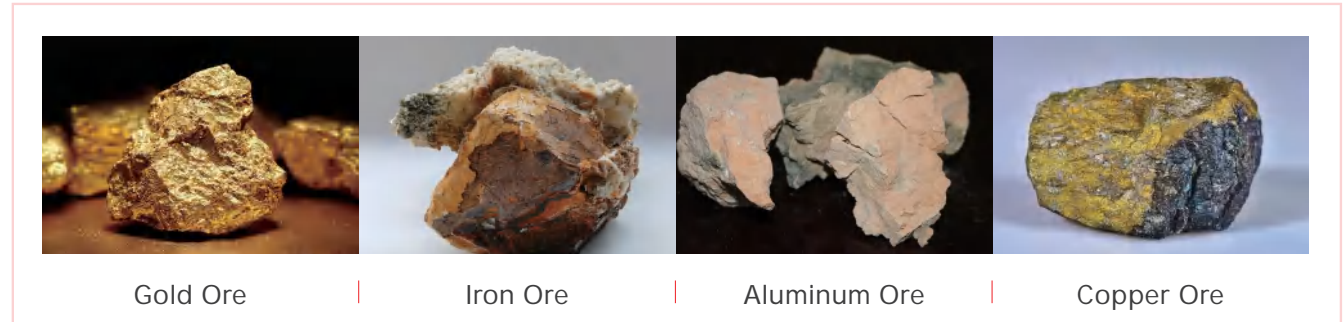
APPLICATION SCENARIOS AND SOLUTIONS

APPLICATION SCENARIO

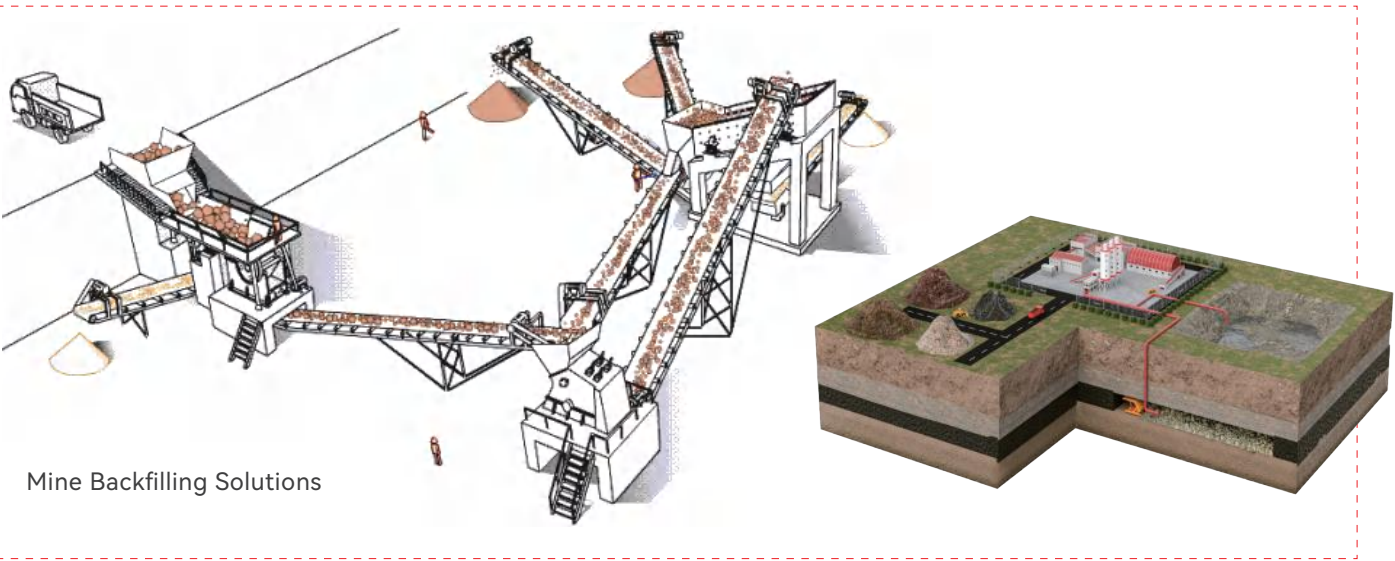
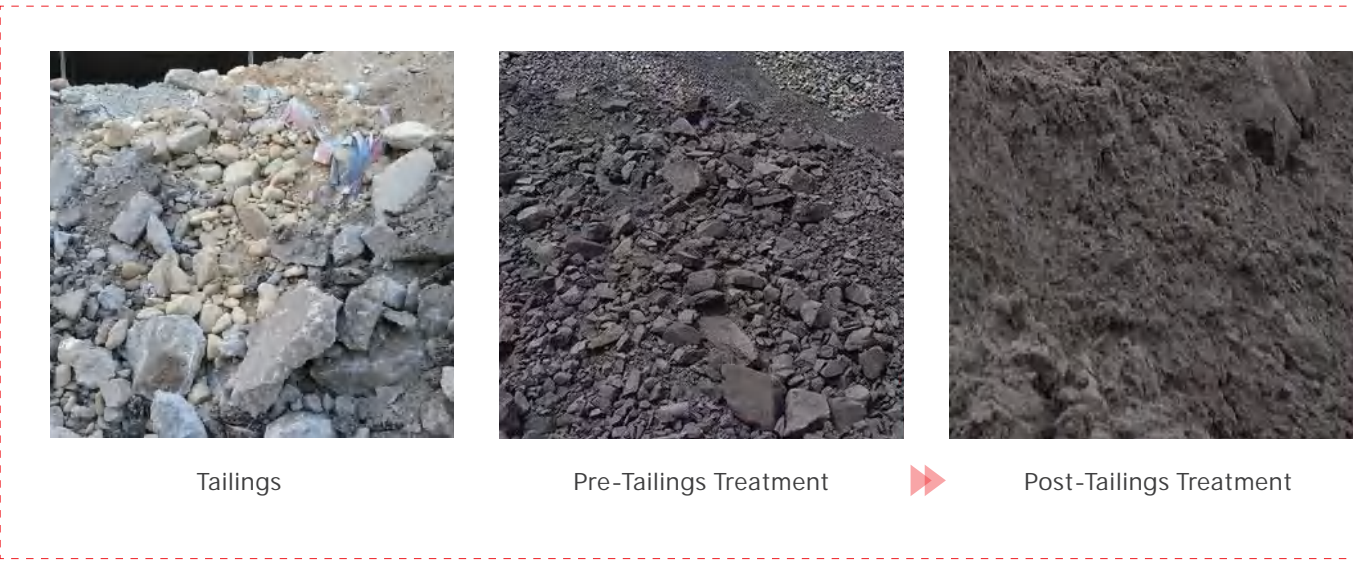
Aggregates & Raw Materials - Provide the essential raw materials for concrete used in construction projects



Metallic Ores - Ore crushing provides the essential raw materials for subsequent grinding and beneficiation processes.



Solid Waste Treatment - Aggregate Recycling and Mine Backfilling



Integrated Design, Construction & Financial Services

Integrated Design and Prefabrication of Steel Structure Modules Factory-based processing ensures rapid drawing output, higher efficiency, and significant cost reduction—shortening project schedules by over 30 days and cutting costs by more than 10%.

Joint Financing of Steel Structures and Equipment. By combining steel structure and equipment financing, SANY increases the total financing amount and effectively addresses customers' funding challenges.

30 Days

>30 days schedule savings

10 %

>10% cost savings



SOLUTION

Integrated Design & Construction

► Cost Savings

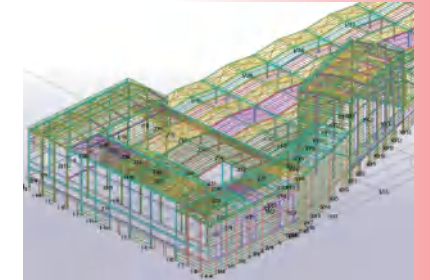
With low-redundancy integrated design and professional construction teams, project costs are reduced by more than 10.

► Schedule Efficiency

Through modular design and professional execution, project time-lines are shortened by over 30 days.

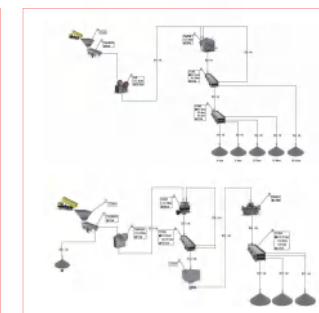
► Safe & Efficient

Led by an experienced design and construction team, projects are delivered with greater safety and efficiency.



01 Requirement Confirmation ►► 02 Process Design ►► 03 Layout Planning ►► 04 One-Stop Delivery

- Raw Materials · Feed Size
- Discharge Size · Capacity
- Applications



Joint Financing with Equipment

► Increased Financing Amount

By combining steel structure and equipment financing, the total financing amount is increased, effectively addressing customers' funding challenges.

► Low-Interest Financing

Joint financing follows the same preferential interest rates as equipment financing loans.

► Simplified Procedures

Only one set of procedures is required when financing together with equipment.



PART 03

PRODUCT INTRODUCTION



Main Equipment

Crusher, Vibrating Screen, Belt Conveyor,
Dust Collector, Control System

SCJ Series Jaw Crusher

Designed for primary crushing of both soft and hard rocks.
Production capacity: ≤1500 t/h
Suitable for small to medium-sized mines or underground operations
Product size: 100–300 mm
Simple structure, stable and reliable performance



TECHNOLOGICAL ADVANTAGES

- **Superior Value Proposition**
Equipped with an integrated steel frame, rubber damping, imported bearings, and automatic grease lubrication system—offering superior configuration compared to leading domestic brands.
- **High Stability & Reliability**
Features European-standard castings and Q345D flaw-detection steel plates for side panels.
- **V-Shaped Crushing Chamber**
Symmetrical chamber design with a unique curve profile and extended length, improving the crushing ratio and feed opening width. Supports full-chamber feeding for stable, high-yield performance.
- **Optimized Motion Track**
Enhanced motion trajectory of the movable jaw effectively increases bottom stroke, reduces vertical travel, minimizes wear and power loss, and improves crushing efficiency.

PRODUCT SERIES

Model	Feeding Size (mm)	Discharge Opening Size (mm)	Capacity (t/h)	Motor Power (kW)
SCJ106	490	70-200	150-560	110
SCJ116	590	70-200	168-580	132
SCJ120	640	70-200	175-595	160
SCJ130	740	100-250	270-915	160
SCJ150	930	125-250	340-970	200
SCJ160	1020	150-300	430-1260	250
SCJ200	1300	175-300	630-1575	400

SCS Series Single-Cylinder Hydraulic Cone Crusher

Designed for secondary and fine crushing of medium-hard and hard brittle rocks.
Production capacity: ≤2000 t/h
Feeding size: ≤300 mm
Product size: ≤100 mm
Stable operation with a high degree of automation
Large processing capacity.



TECHNOLOGICAL ADVANTAGES

- **Superior Configuration**
Standard features include speed monitoring, bushing temperature monitoring, positive-pressure dustproofing, and air pressure monitoring, with optional material level sensors. Overall configuration surpasses leading domestic brands.
- **High Stability & Reliability**
Manufactured with U.S. and European standard materials to ensure component load-bearing capacity. Equipped with Klingelnberg gears for heavy-duty applications, and a dual-seal crossbeam structure to guarantee reliable bushing lubrication.
- **Excellent Adaptability**
Featuring a versatile chamber design with 8 optional chamber types, optimized for process adaptability. Achieves over 80% power utilization in fine crushing and a first-pass yield of more than 70%. Custom-designed liners effectively extend service life.
- **Intelligent Automation**
Equipped with advanced functions such as liner life prediction, one-touch calibration, material level control, smart fault diagnosis, and overload protection. Standard electrical unloading valve group with detection frequency of 200 times per second ensures consistently high performance.

PRODUCT SERIES

Model	Feeding Size (mm)	Discharge Opening Size (mm)	Capacity (t/h)	Motor Power (kW)
SCS300S	450	35-55	270-460	220
SCS400S	560	35-60	350-1000	315
SCS300	215	13-45	120-380	220
SCS400	275	13-50	180-550	315
SCS800	300	13-70	280-1300	630
SCS1000	370	13-70	300-2200	750

SCM Series Multi-Cylinder Hydraulic Cone Crusher

Designed for secondary and fine crushing of medium-hard and hard brittle rocks.

Production capacity: ≤2000 t/h

High degree of automation

Large processing capacity



TECHNOLOGICAL ADVANTAGES

- **Superior Configuration**

Standard features include speed monitoring, bushing temperature monitoring, positive-pressure dustproofing, and air pressure monitoring, with optional material level sensors. Overall configuration surpasses leading domestic brands.

- **High Stability & Reliability**

Built with U.S. and European standard materials to ensure component load-bearing capacity. Equipped with Klingelberg gears to handle heavy-duty conditions, and a dual-seal crossbeam structure to guarantee reliable bushing lubrication.

- **Excellent Adaptability**

Featuring a versatile chamber design with 8 optional chamber types, optimized for process adaptability. Achieves over 80% power utilization in fine crushing and a first-pass yield of more than 70%. Custom-designed liners effectively extend service life.

- **Intelligent Automation**

Equipped with advanced functions such as liner life prediction, one-touch calibration, material level control, smart fault diagnosis, and overload protection. A standard electrical unloading valve group with a detection frequency of 200 times per second ensures consistently high performance.

PRODUCT SERIES

Model	Feeding Size (mm)	Discharge Opening Size (mm)	Capacity (t/h)	Motor Power (kW)
SCM300	230	13-45	150-440	250
SCM400	300	15-50	225-630	315
SCM500	335	16-50	280-790	400
SCM800	350	16-50	385-1200	630

SV Series Vertical Shaft Impact Crusher

Designed for sand making and shaping operations.

Production capacity: ≤800 t/h

Feeding size: ≤60 mm

Product size: ≤30 mm

Stable operation with a unique “rock-on-rock” crushing principle



TECHNOLOGICAL ADVANTAGES

- **High Sand Yield**

Flexible switching between “rock-on-rock” and “rock-on-iron” modes increases sand yield by about 3% and overall efficiency by 6-9%.

- **Easy Adjustment**

Standard hydraulic feed opening adjustment and belt tensioning system reduce labor intensity, enhance automation, and deliver the industry’s optimal solution.

- **Superior Performance**

Featuring a 3/4 channel, high-speed impeller, and hexagonal distributor design, extending wear part life and improving throughput capacity.

- **Stable & Reliable**

The bearing housing adopts thin-oil lubrication to extend bearing life. Standard SKF bearings and Siemens motors ensure reliable and long-lasting performance.

PRODUCT SERIES

Model	Feeding Size (mm)	Main Shaft Speed (rpm)	Capacity (t/h)	Motor Power (kW)
SV7100	45	1400-2000	Cascade + Center Feeding: 120-250 Full Center Feeding: 70-180	110-250
SV8200	55	1300-1700	Cascade + Center Feeding: 250-600 Full Center Feeding: 280-420	320-560
SV9200	65	1100-1400	Cascade + Center Feeding: 600-820 Full Center Feeding: 420-500	630-800

SCI Series Impact Crusher

Designed for secondary, fine crushing, or shaping of soft rocks.
Production capacity: ≤1500 t/h
Feeding size: ≤400 mm
Product size: ≤60 mm
Large feed opening for higher throughput
High crushing ratio with excellent product shape



TECHNOLOGICAL ADVANTAGES

- Heavy-Duty Rotor Design**
Adopts a heavy-duty rotor structure with large rotational inertia and an enlarged crushing chamber. Compared with competitors, output is increased by more than 20% while energy consumption is reduced by 10%.
- Stable & Efficient**
Standard configuration includes SKF or FAG bearings, bearing temperature monitoring and alarm system, and centralized lubrication. Optional automatic lubrication system is available.
- Long-Life Wear Parts**
Blow bars made of Cr26Mo, with optional ceramic composite material; side liners and impact liners made of ZG120Mn13Cr2, exceeding domestic industry standards.
- High-Configuration Design**
Standard hydraulic chamber opening and adjustment device for convenient maintenance. Optional lifting device makes replacement of wear parts easier.

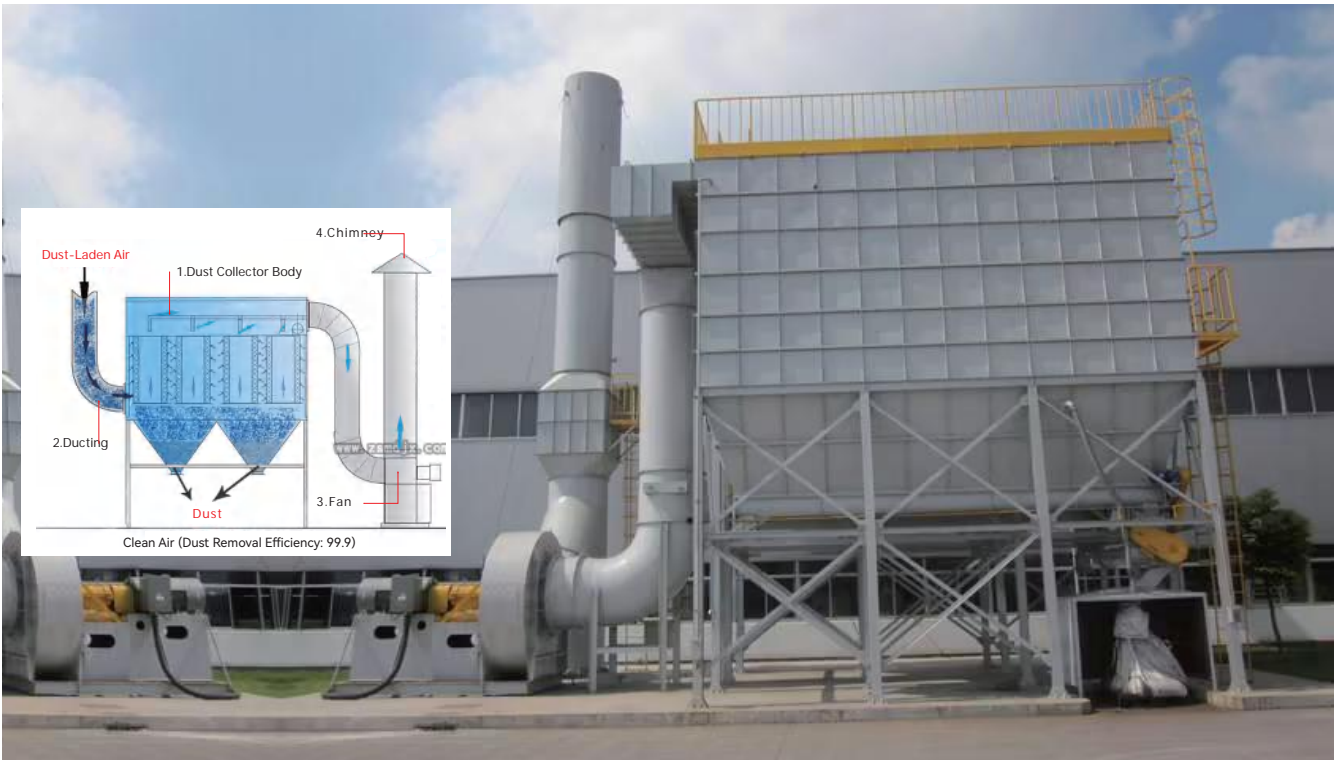
PRODUCT SERIES

Model	Feeding Size (mm)	Discharge Opening Size (mm)	Capacity (t/h)	Motor Power (kW)
SCI1213(Medium Crushing)	400	Φ1200 ×1300	150-350	250
SCI1315(Medium Crushing)	400	Φ1370 ×1500	200-350	250
SCI1315(Fine Crushing)	300	Φ1370 ×1500	200-350	250
SCI1320(Medium Crushing)	400	Φ1370 ×2000	250-450	315
SCI1320(Fine Crushing)	300	Φ1370 ×2000	250-450	315
SCI1520(Medium Crushing)	400	Φ1520 ×2000	350-550	250 ×2
SCI1520(Fine Crushing)	350	Φ1520 ×2000	350-550	250 ×2
SCI2023(Coarse Crushing)	800	Φ2040 ×2300	1000-1500	500 ×2

Main Equipment – Vibrating Screen



Main Equipment – Dust Collection System



Operation & Maintenance – Intelligent Control

Full-Process Automated Operation

Smart plant systems enable unmanned weighing, automatic loading, comprehensive monitoring, and predictive maintenance—reducing operating personnel by 20%.



Comprehensive Monitoring of Critical Components

Real-time monitoring of bearing temperature, spindle speed, hydraulic pump pressure, and flow provides early fault warnings, enabling planned maintenance and minimizing downtime.



Digitalized Management & Control

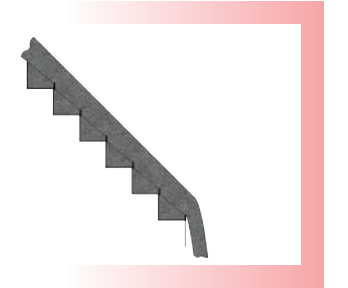
Production line data is monitored online in real time, with full-process dynamic visibility. This enhances transparency and management efficiency, ensuring stable, controllable operations and highly efficient maintenance.



Operation & Maintenance – Environmental Protection

Low Noise

Dust collector fans are equipped with silencers, reducing noise by 20–25 dB. At impact points, a material-on-material design replaces direct impact on steel plates, reducing noise by up to 80%.



Zero Wastewater

Wet production adopts a sand washer + fine sand recovery unit + filter press system, achieving zero wastewater discharge.



Minimal Dust

Crushers and vibrating screens are equipped with fully enclosed negative-pressure systems to prevent dust leakage. Finished aggregate loading is supported by a high negative-pressure system, ensuring dust-free loading operations.



PART 04

AFTER-SALES GUARANTEE

SERVICE OUTLETS



15 mins Responding to customer requests	2 Hours Reaching key service areas	1 Day Providing commonly used spare parts	2 Days Resolving customer complaints	1 Week Addressing legacy issues	1700+ With over 1,700 service centers worldwide	7000+ More than 7,000 technical service personnel	24h Round-the-clock service is available 365 days a year
---	--	---	--	---	---	---	--

SPARE PARTS SUPPLY

 National Warehouse  Regional Warehouse

Self-Developed iSPP Parts Planning System enhances overseas spare parts supply capacity and delivery efficiency.

Upgraded CRM End-to-End Parts Management supports more than 10 languages for global customer service.

Online Visualization of Parts Inquiry Status enables real-time access to inquiry progress, details, and quotation information.



07

Regional Warehouses

185

Self-Operated Warehouses

47

National Warehouses

673

Dealer Warehouses

Building an efficient, reliable, and intelligent spare parts supply system.

PART 05

APPLICATION CASES

Crushing Line Case – Xin Xuefeng, Xinhua, Loudi 500 t/h Limestone Crushing Production Line



Crushing Line Case – Ruituo, Liaoyang 750 t/h Crushing Production Line (Iron Tailings)



Crushing Line Case – Lulian Mining, Zhangqiu, Shandong 1200 t/h Crushing Production Line (Basalt)

